

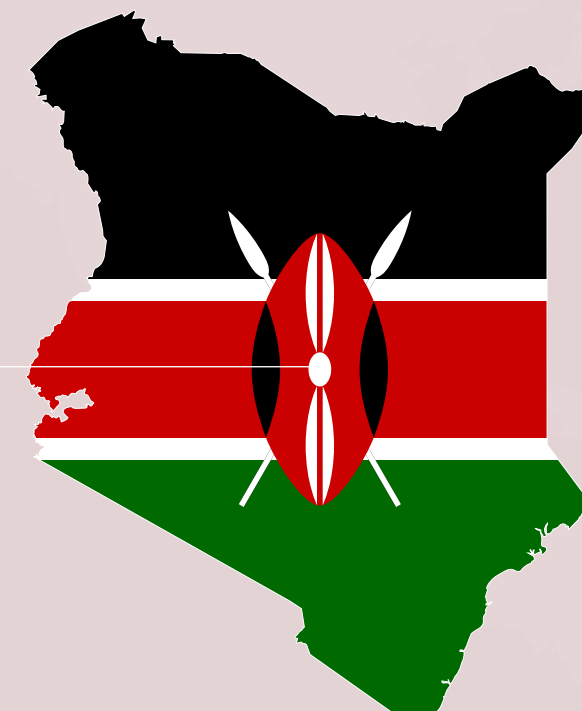
WELCOME

KARIBU

WILLKOMMEN

KARIBU WELCOME KARIBU

WILLKOMMEN WILLKOMMEN



To the Heart of Kenya!

Enashipai

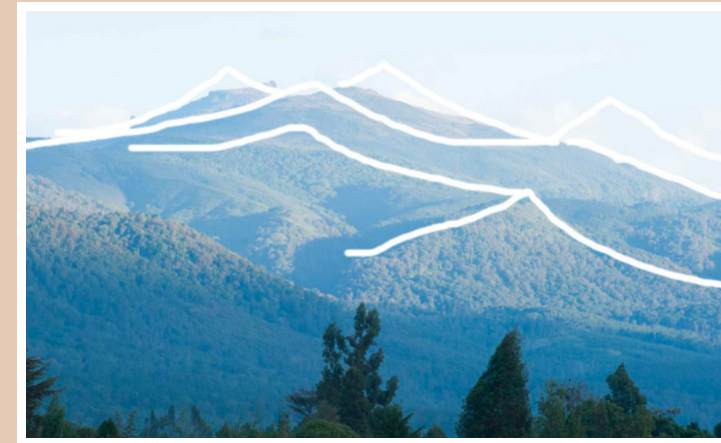
A Maasai word meaning **“A Place of Happiness!”**

Located within the splendour of the Great Rift Valley and by the shores of Lake Naivasha, Enashipai Resort and Spa is an award-winning leisure and conference destination offering authentic African hospitality focused on wellness. We pride ourselves in curating unique and memorable experiences for our guests.



ARCHITECTURE

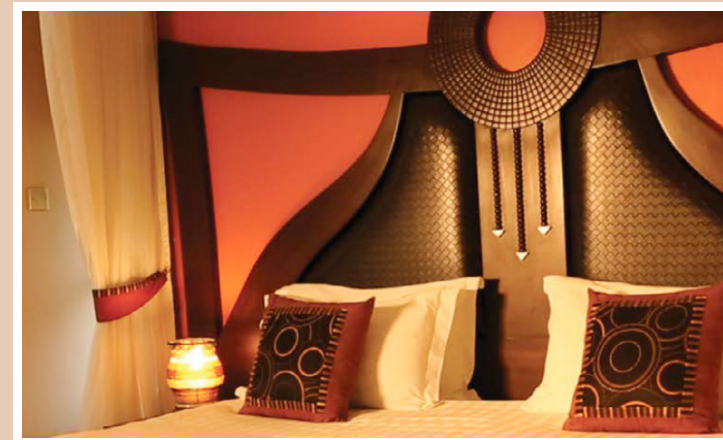
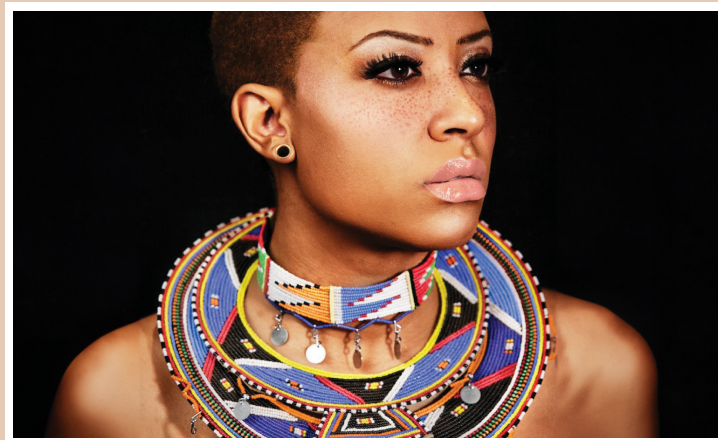
The architecture of the resort was inspired by Naivasha's natural beauty, thus creating a real distinct sense of place. Roof-top tiers echo the undulating hills of the surrounding Mau and Aberdare hills. The yellow barked trees give it that unique Naivasha feel and can be seen in the unique trusses that support the roof.



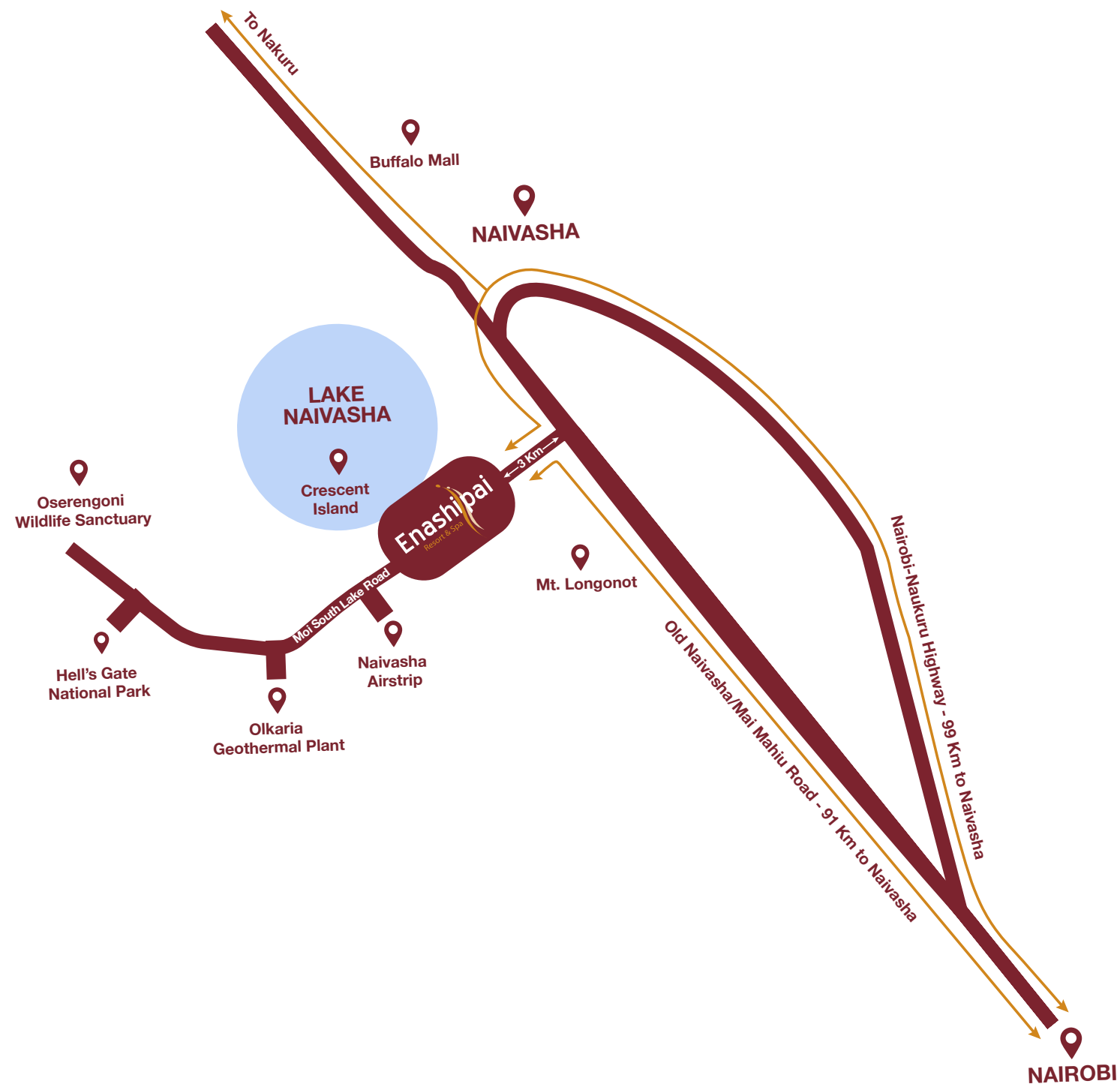
DESIGN

Culturally rich and endowed with nature, Naivasha has many faces and is the source of inspiration for Enashipai's decor. With lovely afro chic interiors, our rooms house the signature Maasai necklace headboards that are a copyright to Enashipai.

All around the hotel you will notice beautiful artworks and interior touches inspired by Kenyan artists.



GETTING THERE



FROM NAIROBI (Kenya):

- JKIA International Airport (Kenya's main airport) - 115 Km
- By road from Westlands, Nairobi - 90 Km
- By air from Wilson Airport to Naivasha Airstrip - 20 min

NEARBY ATTRACTIONS (From Enashipai):

- Maa Museum - 200 m
- Siyara Spa - 400 m
- Naivasha Airstrip - 2.5 Km
- Crescent Island - 3 Km
- Naivasha Town - 6.6 Km
- Naivasha Railway Station - 6.7 Km
- Buffalo Mall - 8.5 Km
- Delamere Supermarket - 10 Km
- Mt. Longonot - 19 Km
- Olkaria Geothermal Plant - 23.8 Km
- Hell's Gate National Park - 28 Km
- Oserengoni Wildlife Sanctuary - 29 Km
- Lake Nakuru National Park - 70 Km



AT A GLANCE

135

Indulgently spacious and comfortable rooms offering sweeping views of the surrounding hills or the lush tropical gardens spilling over their banks.

16

Honeymoon Suites (among the 135 rooms on property) where unparalleled luxury meets stunning 1st and 2nd floor views, coupled with a dining area offering panoramic views, set amidst lush tropical gardens.

3

Restaurants to explore exciting culinary and dining experiences with a mix of our exemplary buffet service, set menus, themed brunches and room service options, curated by our professional Chefs.

1

Fabulous spa - **Siyara Spa** - offering a holistic selection of spa experiences in sensational surroundings promises complete wellbeing and serenity.

2

Bars offering a wide selection of fine liquors and wine, plus arguably the best nightclub in East & Central Africa - **The Wave Nightclub**.

400+

Bird species including the Fish Eagle and Fulvous Whistling-Duck, plus hippos and waterbucks, that call Naivasha their home.





Fountain Executive Rooms

Size: 60 sqm

View: Fountain | Panoramic

Outdoor showers: 20 upper rooms

- Our pioneer signature rooms
- Indulgently spacious and comfortable
- Balcony overlooking the signature fountain
- 24 interconnecting rooms

 10 BLOCKS | 40 ROOMS

Garden Executive Rooms/Cottages

Size: 35 - 45 sqm plus extra lounge

View: Gardens | Spa

Outdoor showers: 4 rooms near Siyara Spa

- Great for families and conference groups
- Kitchenette and shared living room
- Extra TV in the lounge
- 2 or 3 bedroom cottages

 11 COTTAGES | 47 ROOMS





Honeymoon Suites

Size: 180 sqm

View: Gardens | Villas

Outdoor showers: 16 rooms

- Ultimate luxury
- Incredible 1st and 2nd floor views
- Panoramic views from the dining area
- Surrounded by lush tropical gardens

 16 VILLAS | 32 ROOMS

Villa Executive Rooms

Size: 42 sqm plus entry lobby

View: Gardens

Outdoor showers: None

- Offer great flexibility as they connect to Honeymoon Suites if booked as full villa
- Compact yet luxurious
- Beautiful lobby entrance

 16 VILLAS | 32 ROOMS



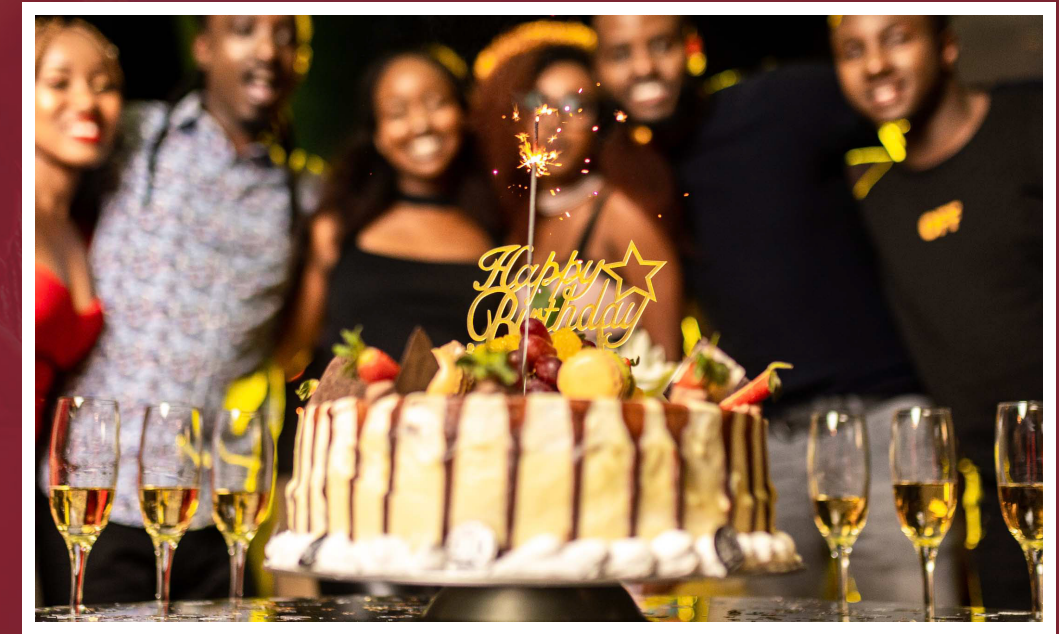
*Your journey is not complete,
without a visit to Enashipai.*



Unexpected Nightlife

Fitting your every mood and preference, the Wave Nightclub offers a great choice of entertainment for a night out with family, friends or colleagues.

Talk to us today and turn your birthdays, reunions, weddings, and other special milestones into an extraordinary experience.

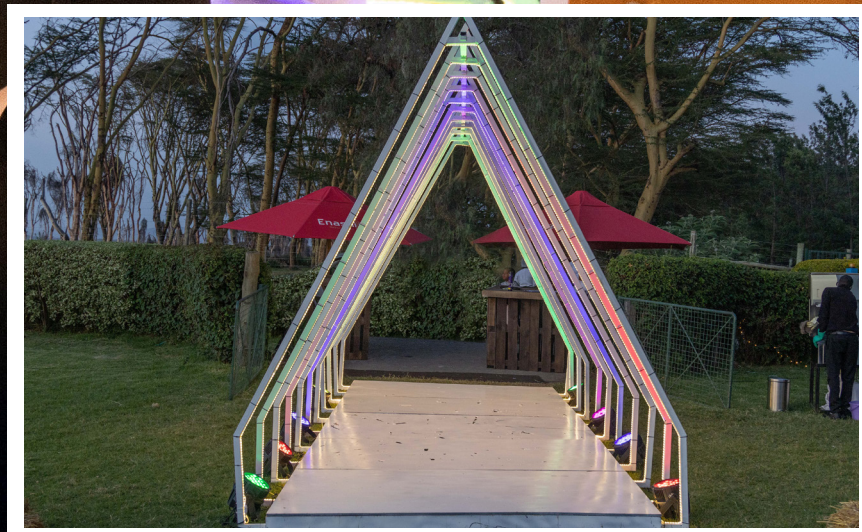




LAKESIDE BAR

Our bespoke Lakeside Bar offers a picturesque setting, perfect for hosting exceptional events that leave a lasting impression.

This is where every moment becomes a unique celebration, surrounded by the beauty of nature.





OLTEPESI BAR

Experience the ideal spot for sundowners under one of the oldest acacia trees on our property.

Set under one of the oldest acacia trees in the resort, Ol Tepesi Bar is the ideal spot for sun-downers. Here, you can enjoy easy evenings with friends while sampling one of the widest selections of fine liquors from all over the world.



CULINARY DELIGHTS

Discover culinary mastery at Enashipai, where Kenyan flavours meet international gourmet delights. Whether you're indulging in the freshest dishes made from the finest ingredients at Senteu Restaurant or celebrating a special occasion at Entumo Restaurant, a sublime dining experience awaits.



BREWED BLISS

Whether you're in the mood for a good book or a friendly catch-up, our Coffee Lounge provides the perfect backdrop with its warmly intimate corners and an exquisite à la carte menu. Sample the crème de la crème of Kenyan Coffee while enjoying our discrete service that lets you peacefully while away the hours.



A serene escape...

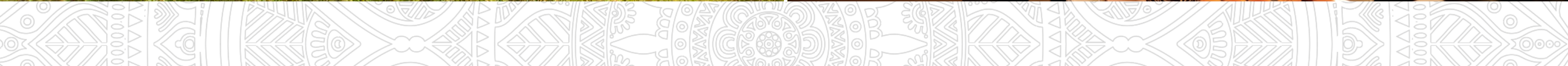




Siyara

spa & salon

Immerse yourself in the haven of peace that is **Siyara Spa**, where every service is crafted to offer a harmonious symphony of rejuvenation. A serene escape from jet lag, the hustle and bustle of everyday life or from safari, here, you'll rediscover the essence of tranquillity and holistic wellbeing.



Business trips?
We got you!

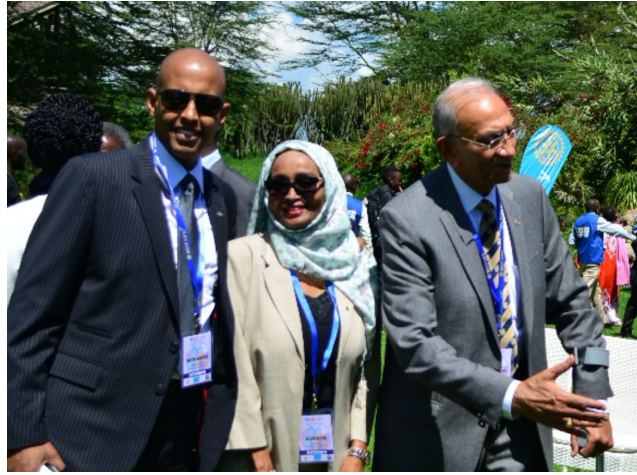
Entumo Conference Centre offers large, adaptable meeting spaces, state-of-the-art technology for virtual/hybrid meetings, and expert staff ready to assist with events of any scale. Catering to over 500 guests, we ensure a safe, connected, and seamless experience.



MEMORABLE EVENTS



MEMORABLE EVENTS



FASHION COOKOOU

- A wide range of cuisines
- Glamorous fashion show
- Fun for the entire family



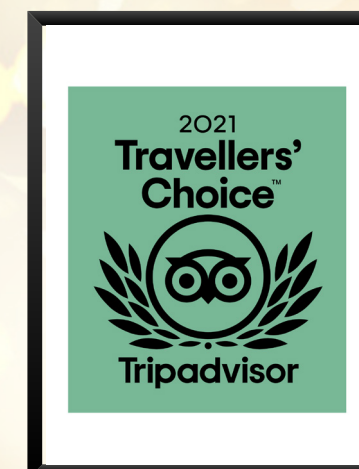
EXCURSIONS

- **Lake Naivasha (Enashipai lakefront)**
A freshwater lake, home to over 400+ bird species & hippos
- **Crescent Island National Park (3km)**
Hidden gem in Naivasha - best for walking safaris
- **Mt. Longonot (19km)**
A hiker's paradise with an elevation of 2,776m
- **Hell's Gate National Park (28km)**
Stunning geological marvels, a geothermal spa & rock climbing
- **Oserengoni Wildlife Sanctuary (29km)**
Perfect for game drives, bush breakfasts and dinners
- **Lake Nakuru National Park (70km)**
A wildlife haven ideal for game drives, hiking & picnics
- **Aberdare National Park (80.7km)**
Forested ravines, wildlife haven, and bird enthusiast's paradise
- **Maasai Mara (231km)**
A premier Kenyan safari site showcasing remarkable wildlife

•Above distances calculated from Enashipai•



AN AWARD WINNING RESORT



Celebrating a Decade Plus of Excellence!

WHAT'S BEEN SAID ABOUT US

“ The staff is terrific and the grounds are beautiful
~ Robert Godec
(US Ambassador to Kenya - 2014) ”

“ Great hospitality... I hope to be back! ~ Angelion Garzon
(VP, Colombia - 2012) ”

“ I will be back!
~H.E Uhuru Kenyatta
(President of the Republic on Kenya-2016) ”

“ Impressive facility...
~Najib Balala
(CS Tourism - 2018) ”

“ Great hospitality. Wonderful facility. The kids play area is friendly and a great idea. Thank you for the excellence and “the little things that matter.”
(Victor Omollo | Google Review - 2020) ”

“ Enashipai lives up to its reputation. You were excellent. The ambience was lovely and quiet, enabling one to do their work and relax. The rooms were beautiful and the staff more than helpful. Super glad I got to experience the place.
(Loise | TripAdvisor review - 2021) ”

“ Enashipai does not dissappoint! The elegant conference rooms, especially the technology they use, made our Oxfam meeting go so well! It was a true pleasure to be there and look forward to a return with my family.
(Joyce | Google review - 2020) ”

“ My stay at the hotel was good. The catering service in the restaurant met my expectations. Having low salt, low fat diet in the evening was a plus. The staff were friendly and went out of the way to get what one needed. The meals were ready on time and enabled one to keep to schedule. The conference room was always neat and adequate stationery provided.
(Mwaura | TripAdvisor review - 2022) ”

“ Enashipai is a beautiful place. From the rooms, dinning area, conference halls. Its simply amazing. I enjoyed the sauna and steam bath. The resort has a wonderful game room. My stay was wonderful. Its the place to be!
(Martha | TripAdvisor review - 2022) ”

“ We loved our room, the sauna and steam rooms... Ah, to live for... Birds chirping, wildlife near the lake, wow. Very peaceful environment for a perfect getaway.
(Peter K. | TripAdvisor Review - 2023) ”



WE CARE

ENASHIPAI IN THE COMMUNITY: #SHARELOVE" CAMPAIGN



In December 2017, Enashipai Resort and Spa teamed up with a UBUNTU Special Needs Centre, in Naivasha, to launch a campaign in support of the organization's goal to combat stigma and injustice by providing therapy, education and vocational training for children with special needs.

The goal was to rally financial support from well-wishers to provide therapy equipment, clothing, food items and library books. The resort's Christmas campaign was centered along the theme dubbed "#ShareLove".

WE CARE

ENASHIPAI IN THE COMMUNITY: THE J.K MWANGI LIBRARY



During the Christmas season 2018, we ran a campaign through our guest network dubbed “Donate a Book – Build a Library!”

On April 29th 2019, we handed over a fully equipped library to Mirera Primary School thanks to a successful partnership between our guests and our partners. The library was named after our late Chairman J.K.Mwangi as he was an avid supporter of education and was instrumental in mobilizing the hotel to commit resources and engage partners. In addition to the Hotel’s sponsorship, we partnered with Story Moja, Moja Tu, Shah Timber and The Nobility Project to make this library a reality.

The Enashipai scholarship fund partnership with Moja Tu catered to 18 students on full high school scholarships, with an active mentorship program and life support skills included.

MULTIPLE ROUTES TO GET TO US



20+

International flights (direct) from all across the globe

3+

International flights (with a stopover) from **Nairobi**

3+

International flight (direct) from **Frankfurt**

15+

International airlines flying to Nairobi, Kenya

2,000+

Flights per month to Nairobi, Kenya

NB: Flight data as of 25th January, 2024 | Source: booking.com



#PlaceOfHappiness



it's the little things

Resort Location: Moi South Lake Road, Naivasha | **Booking Office:** Sundowner Office Park, Mbaazi Close, Off Kingara Rd, Lavington, Nairobi

☎ +254 51 2130000 | +254 20 5130000 | +254 719 051000 ✉ sales@enashipai.com 🌐 www.enashipai.com

🐦 @enashipai 📘 enashipai resort & spa 📷 enashipairesort